

Notice



▶ Please report immediately if unfamiliar diseases and insect pests are found.

- Domestic fruit trees and agricultural production may suffer great damages when overseas diseases and insect pests are brought in. Please immediately report to the Animal and Plant Quarantine Agency if unfamiliar diseases or insect pests are found at locations such as orchards or agricultural product cultivation lands.



Red imported fire ant



Fire blight



Codling moth



Fruit fly



Overseas disease and insect pest report contact number

Animal and Plant Quarantine Agency | **054-912-0667** (Plant Disease Control Department)
054-912-1000 (Extension line 2)

▶ Departure/Entry declaration guide for persons related to livestock

- Persons related to animal farms or livestock industry, must report their departure/entry to the Animal and Plant Quarantine Agency before and after travelling to countries affected by contagious animal disease

How to check countries which had an outbreak of livestock epidemic
www.qia.go.kr ⇒ Animal Quarantine ⇒ Analysis of Import Risk ⇒ Occurrence tendency of overseas livestock epidemic

In case you fail to report your departure and entry, shall be punished by a fine not exceeding 3,000,000 KRW and 10,000,000KRW, respectively

Declaration of Departure Use the smartphone mobile website for convenient declaration (eminwon.qia.go.kr/m)

Declaration of Entry Visit the quarantine office of the airport/port you arrive at.



Main contact number

Inquiries on departure and entry report
1670-2870

Scope of individuals related to livestock

- Animal medicine manufacturer, seller, or employee
- Feed manufacturer, seller, or employee
- Livestock excretion collector/transporter
- Crude oil collector/transporter
- Practitioner in the livestock market or slaughterhouse
- Livestock owner and family members* living with the owner
- Individuals employed by a livestock owner and family members living with the person
- Veterinarian, livestock disease control staff, founder and employees of livestock artificial fertilization centers

* Those registered on the Resident Registration (including family members who actually live in the residence)

- Refrain from visiting livestock farms and livestock markets overseas.
- Refrain from visiting domestic livestock facilities for at least five days after returning to Korea.

Quarantine report and inquiry contact number



Airport/harbors Contact number

Incheon International Airport Regional Office

| | | | | |
|--|--------|--------------|-------|--------------|
| Incheon International Airport Terminal 1 | Animal | 032-740-2661 | Plant | 032-740-2077 |
| Incheon International Airport Terminal 2 | Animal | 032-740-2028 | Plant | 032-740-2029 |
| International Post Office | Animal | 032-740-2684 | Plant | 032-740-2089 |
| Express Cargo Center | Animal | 032-744-5551 | Plant | 032-744-5554 |

Yeongnam Regional Office

| | | | | |
|---------------------------------|--------|--------------|-------|--------------|
| Gimhae International Airport | Animal | 051-971-4991 | Plant | 051-971-0480 |
| Daegu International Airport | Animal | 053-982-5096 | Plant | 053-981-2838 |
| Port of Busan | Animal | 051-441-1835 | Plant | 051-466-1836 |
| Busan International Post Office | Animal | 051-971-4991 | Plant | 055-388-3741 |

Jungbu Regional Office

| | | | | |
|--------------------------------|--------|-----------------|--------------|-----------------|
| Port of Incheon Terminal 1 | Animal | Plant | 032-891-3245 | |
| Port of Incheon Terminal 2 | Animal | Plant | 032-772-0147 | |
| Cheongju International Airport | Animal | Plant | 043-213-0287 | |
| Pyeongtaek Port | Animal | 031-8053-7707-9 | Plant | 031-8053-7702-4 |

Seoul Regional Office

| | | | | |
|---|--------|--------------|-------|--------------|
| Gyeongui Line (Dorasan Mountain) | Animal | 02-2650-0622 | Plant | 02-2650-0644 |
| Gimpo International Airport | Animal | 02-2664-0601 | Plant | 02-2664-3844 |
| Donghae Port, Sokcho Port, Yangyang International Airport | Animal | 033-635-9125 | Plant | 033-635-3862 |

Honam Regional Office

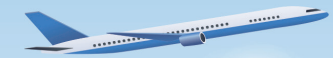
| | | | | |
|----------------------------|--------|--------------|-------|--------------|
| Gunsan Port | Animal | 063-460-9430 | Plant | 063-460-9450 |
| Muan International Airport | Animal | 062-975-6030 | Plant | 061-452-6797 |

Jeju Regional Office

| | | | | |
|----------------------------|--------|--------------|-------|--------------|
| Jeju International Airport | Animal | 064-746-0761 | Plant | 064-746-2460 |
| Jeju Port | Animal | 064-728-5350 | Plant | 064-728-5400 |

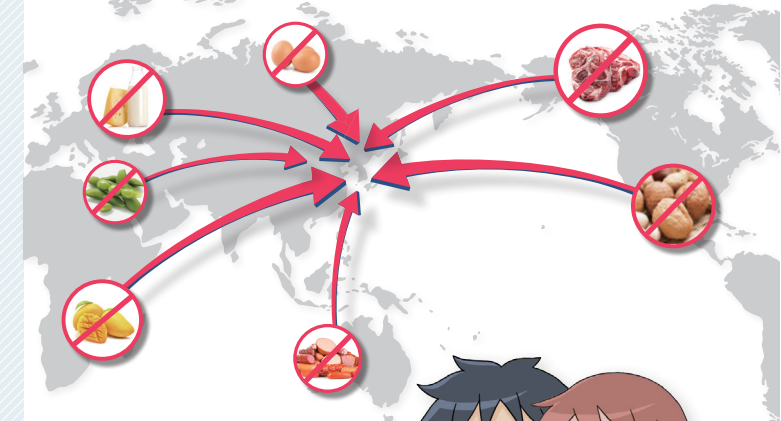
Please visit the Animal and Plant Quarantine Agency website for detailed information.

<http://www.qia.go.kr>



Animal / Plant Quarantine Guide

"Bringing animals, plants, agricultural and livestock products from overseas to Korea is strictly restricted."



Animal and Plant Quarantine Agency

What is animal/plant quarantine?



In order to prevent inflow of Contagious animal disease, plant disease and insect pest into Korea, **quarantine** procedures are carried out in airports and harbors across the country.

Quarantine procedure



Arrival to Korea (airport, harbor, post office)



Immigration



Fill out the customs declaration form (quarantine report)



Animal, plant, agricultural product, livestock quarantine

Can only be brought into Korea, when no issues are found with the quarantine results.



Customs Examination



Entry to South Korea

- A Fine up to **10,000,000 KRW** may be charged if carried animals, plants, agricultural or livestock products are not declared.
- Quarantine is also required when bringing agricultural or livestock products from overseas through postal service.

Plant Quarantine



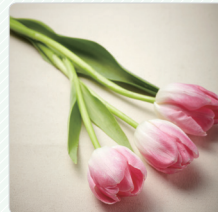
Items which must be declared

- All agricultural products, including grains, fruits, vegetables, dried chili, sesame seeds, fresh ginseng, dried mushroom, medicinal herbs, and spices
- Seeds and seedlings including seeds, seedlings, bulbs, cutting slips, and scions
- Lumber, wood packing material, live diseases and insect pests

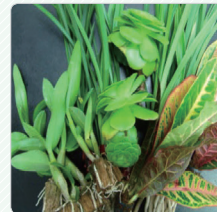
* **Phytosanitary certificate must be turned in for plants used for planting, such as seeds, seedlings, and bulbs. Prior approval is required if Phytosanitary certificate is not turned in.**



Vegetable



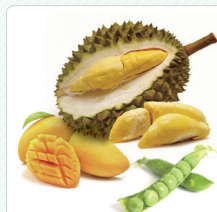
Flower (cut flower)



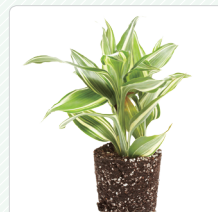
Seedling

Plants prohibited from importation

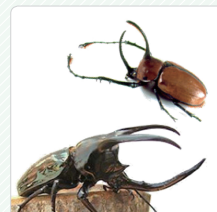
- Fresh fruits and vegetables, including mangoes, limes, oranges, papayas, apples, chilies, and unripe beans
- Potatoes, sweet potatoes, yams, walnuts with shells
- Seedlings, scions, and cutting slips of fruit trees such as apple trees, pear trees, and grape trees
- Soil, plants with soil attached, live diseases and insect pests, and seeds of weeds



Fresh fruits, fruit vegetables



Plants with soil attached



Live insects



Please refer to the QR code for detailed information on prohibited items.

Animal Quarantine



Restricted Items

- Pets: Dogs, cats, birds, etc.
- Dairy products: Milk, cheese, butter, etc.
- Meat and processed meat products : Beef, pork, chicken, sausages, ham, jerky, canned meat etc.
- Animal products: Deer antlers, bones, feathers, etc.
- Egg and Processed egg products : chicken egg, other bird's egg, egg white, egg powder, etc.
- Pet feed, snacks, supplements, etc.
- Vacuum-packaged finished products which include prohibited items

- ❖ Animals and most livestock products cannot be brought into Korea without **quarantine certificate issued by a government agency of the exporting country.**
- ❖ If you are carrying livestock products and food which includes livestock products, please report to the Animal and Plant Quarantine Agency to check if you can bring those items into Korea.



Pets



Dairy products



Meat products



Dumplings



Eggs



Sausage



Blood sausage



Dried meat



Feed